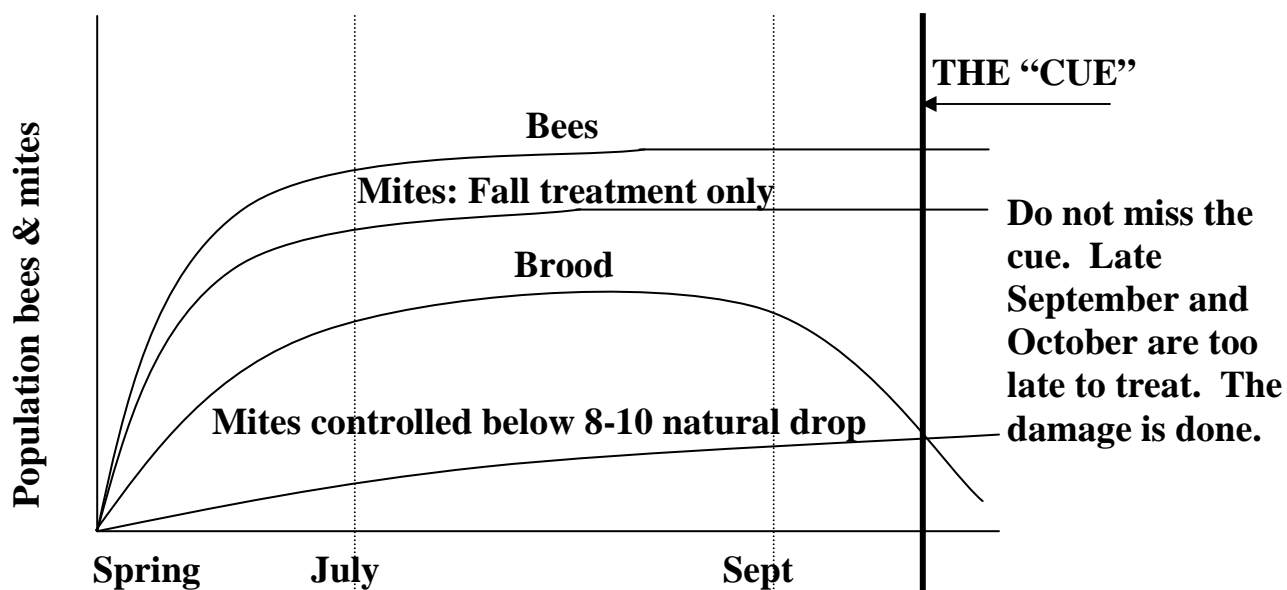


WHEN TO TREAT:



KEEP MITES BELOW 8-10 MITES

Spring and fall natural drop prorated to 24 hours

Treat twice per year

- **In the late summer** treat before mites cause damage to brood that will become winter bee stock. Leave pads in until spring for reuse.
- **In the spring** treat before extensive brood build up, when you are reversing hives or preparing for pollination.
- **In sub-tropical climates**, treat hives at the beginning and at the end of the driest part of the year.
- **The tracheal mite:** 21 day treatment in the spring or fall will eliminate this pest from your operation.